



Stewardship 2024

Stewardship in Action

Giving of Time

If you are wondering how you can participate in stewardship of your time, we have a few suggestions for your prayerful consideration.

- SMILE - Serve with our First Impressions Team
 - Ushers, Welcome Desk Host, Door Greeter, Refreshment Coordinator
 - Once a month or every week
- SERVE - Assist with Communion
 - prepare communion elements or serve communion
 - 1st Sunday of each Month; you can serve monthly or quarterly
- ROCK! We have had 4 new babies in the past year and they love to be loved on. You just have to sit and rock them.
 - Sundays once a month from 9:15 am - 10:40 am
- TEACH - during W@W
 - KIDMIN W@W - For two to three weeks, you can teach a hobby or skill to our children. Hobbies such as woodworking, cooking, baking, sewing, or sports are just a few ideas.
 - KIDMIN SUNDAYS - We also need large group leaders. Large group leaders serve 4 to 5 weeks at a time teaching the major lesson of the session.
- COOK - Meal Train Team
 - Prepare and deliver meals to those who are sick
 - As needed



Save the date for a Celebration, May 19th

10am One Church-Wide Service led by our Youth

11am Congregational Meeting

12pm Church-wide Luncheon (gym)



CHRIST centered

100 kids at VBS!

- Christ-centered education
- 80 adults in Sunday School
 - 75 adults in W@W
- Christ-centered community
- 400 attended the All About Easter

- Milestones in family focus:
- We added 21 members to our family of faith
 - Preteens (5th-6th) moved to youth for more age appropriate development

8 Baptisms in 2023!

- Impact of our schools:
- TAPS was recognized for the 4th year in a row for top preschools in the area.
 - Kardia increased enrollment to 130 students.
 - 350 children hear the Word of God every time they are at school and see the church as a nurturing and caring place.
 - The gospel is spread in almost 300 homes where the children pray, sing songs of praise, and discuss Bible lessons they learn at school.
 - Our community is enriched through the safe care and education of the next generation and confident parents at home or work.

FAMILY focused



NEW TO KNOW!

NEW CLASS BEGINNING APRIL 7th
 Our Young Families Class will meet the 1st Sunday of each month from 11 - 1. 11 - 12 will be enrichment for parents followed by lunch and play for the whole family.

AFAH celebrates their continued dedication to the spiritual wellness of families. They welcomed a new counselor who specializes in play therapy for young children!

8th grade opens for the 2024-2025 school year at Kardia.

- Milestones in glorifying God -
- New Sunday Liturgy involves our family of faith in prayer and praise.
 - Sunday Worship attendance average - 244 in-person and 25 online.
 - 6 Members went on a Living Water Trip to Guatemala

GOD glorifying

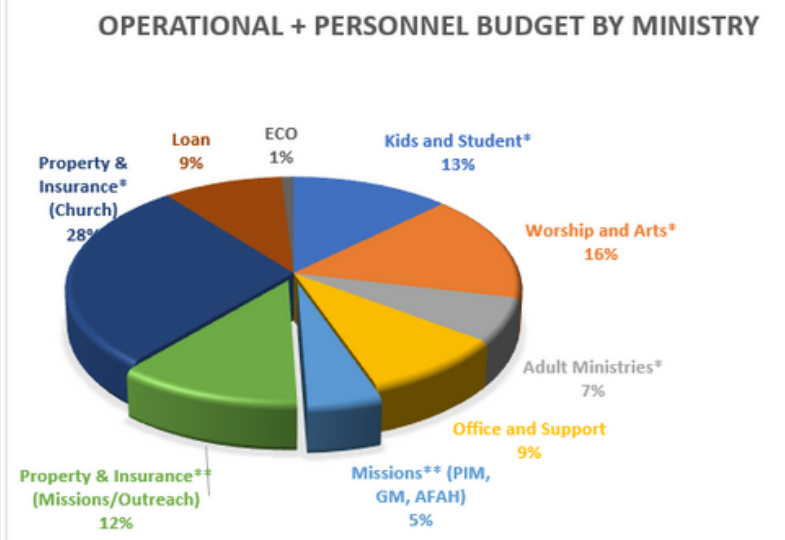
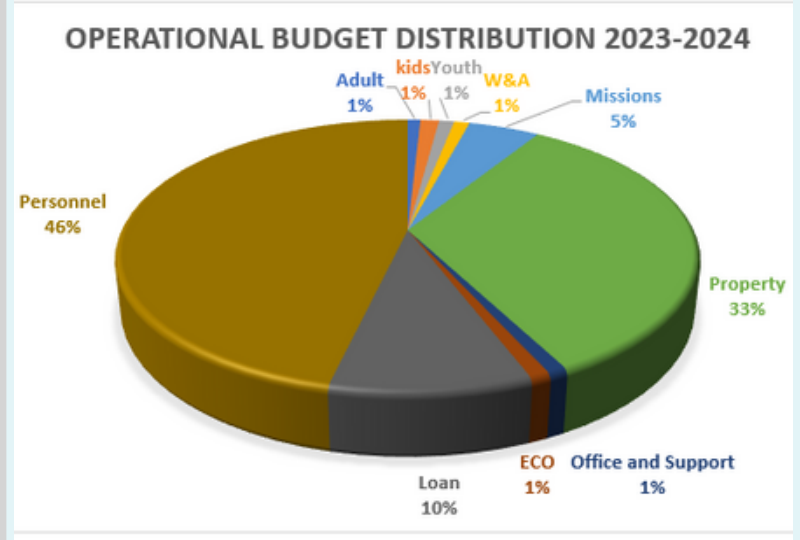
6 confirmands became members in 2023!

STEWARDSHIP: Stats and Facts

TOP ANNUAL LINE ITEM EXPENSES*

- Utilities - \$192,000
- Property Insurance - \$170,000 (up 43% over last year)
- Cleaning - \$102,000
- Health Insurance for staff - \$46,000 (11% increase over last year)

*(not including personnel expenses)



*Operational budget + staff budget
 ** Property expenses allocated for schools and mission support

Pledging Trends

year	# of pledges	amount \$
2023/24	131	\$925,034
2023	135	\$662,329
2022	149	\$1,263,069

The graph above shows the allocation of our budget by ministry. This includes the operations and personnel budget for each ministry. When we combine the Missions budget (local and global) with the budget allocated for property expenses that support our schools and other on-campus ministries, Windwood allocates over 17% of our budget to mission and outreach.

- A "typical" church budget:
- 10-30% Missions/ Outreach
 - 20-40% Church Ministry
 - 40-60% Staff Expense
 - 20-40% Facility Expense

Making our Missions more Impactful

Over this year, Community Missions has assessed each of the Community Partners with criteria such as - alignment with our mission, financial resources, ability to volunteer, and other factors to reassess our partnerships. With prayer, the Council has created two tiers of support. Tier 1 - Monthly financial contribution, prayer, volunteer support, and need collection. For our Tier 2 partners, we will support them with our facilities.

Tier 1 Local Mission Partners

- A Future and A Hope Counseling Ministries
- Boys and Girls Country
- CareNet Pregnancy Center
- Cypress Assistance Ministries
- Operation Christmas Child
- Mission of Yahweh
- Northwest Assistance Ministries
- TOMAGWA
- Tomball Emergency Assistance Ministries